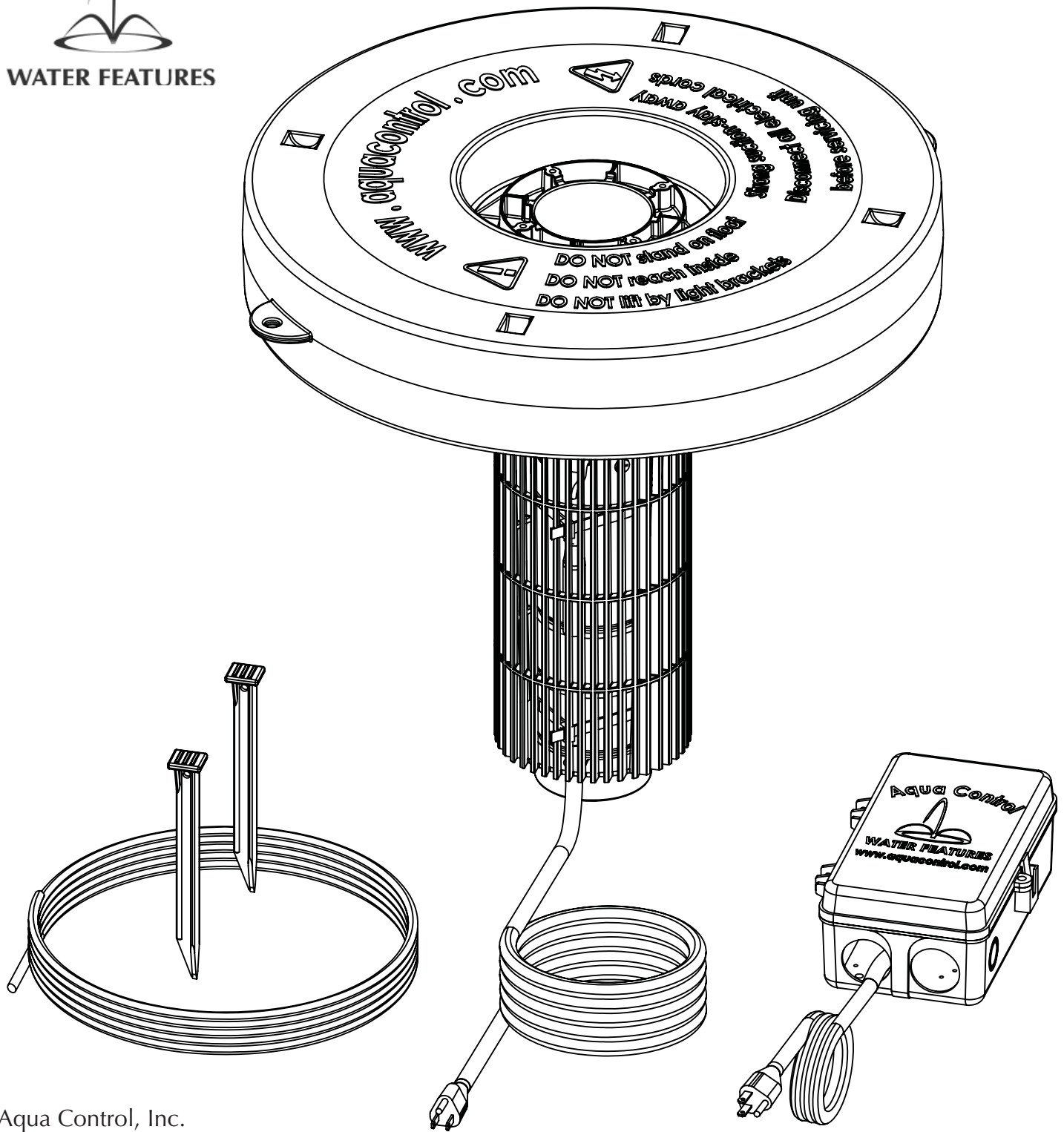


Aqua Control



WATER FEATURES

# OWNER'S MANUAL



Aqua Control, Inc.  
6A Wolfer Industrial Drive  
Spring Valley, IL 61362  
Ph: 815.664.6400  
800.377.0019  
Fax: 815.664.4901  
www.aquacontrol.com

*Evolution Series Fountain*

1/2 hp, 115V, 60 Hz

# SAFETY INSTRUCTIONS

- Under **NO** circumstances should anyone enter the water with the electrical equipment plugged in and/or in operation.
- **NEVER** run the unit out of water. It will damage the seals and create a dangerous situation for the operator.
- **NEVER** lift or drag the fountain by the power or light cord.
- The fountain suction screen should be inspected for clogging on a monthly basis. If matted weeds, leaves and plastic bags are present, remove them with a bristle brush. Failure to keep the suction screen clear of blockages will cause low water flow and cause the fountain motor to fail. This type of failure is NOT covered under the Aqua Control, Inc. warranty.
- In freezing conditions, the fountain must be removed from the water body and stored in an area above 32.°

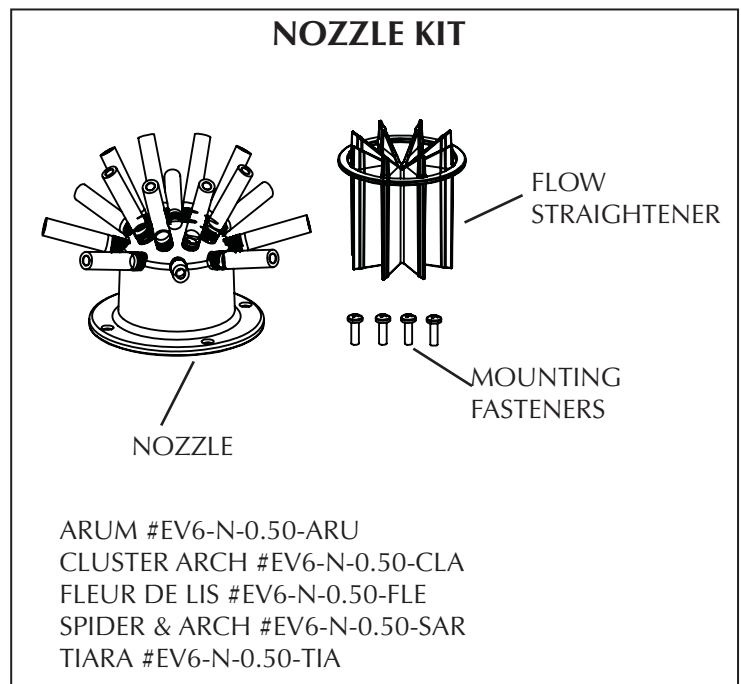
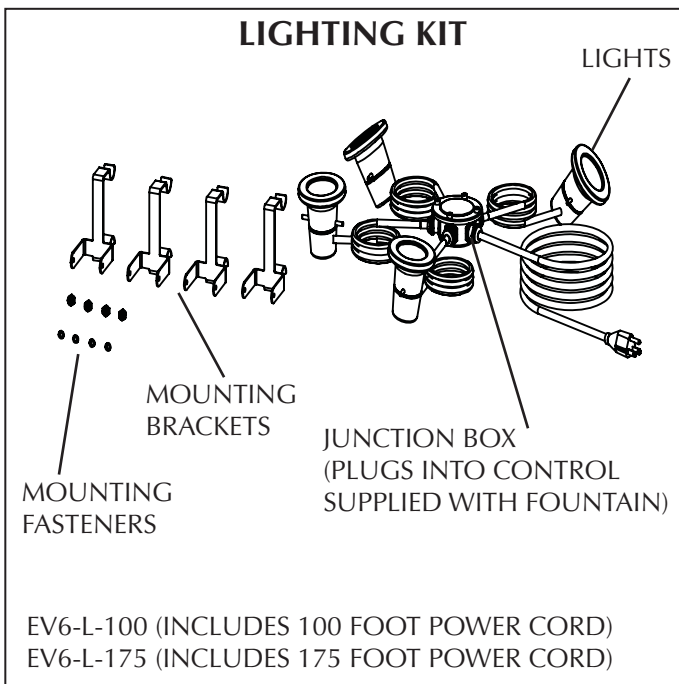
## GENERAL INFORMATION

If a manufacturing defect is encountered within two years, please contact your Aqua Control, Inc. distributor. If the distributor directs you to return the product, please carefully package the product in its original box and send with shipping and insurance pre-paid to the distributor. Upon receipt of the returned product, the distributor will inspect the item and determine the validity of the claim. If the provision of this warranty covers the item, the item will be repaired or replaced by Aqua Control, Inc. at no charge.

This limited warranty does not apply if the Evolution Series fountain is subject to negligence, abnormal use or operation, accident, improper operation, improper voltage or current, or damage by circumstances beyond Aqua Control's means, including but not limited to fire, flood, freezing, or other external environmental forces. The limited warranty does not cover unauthorized alterations or repairs.

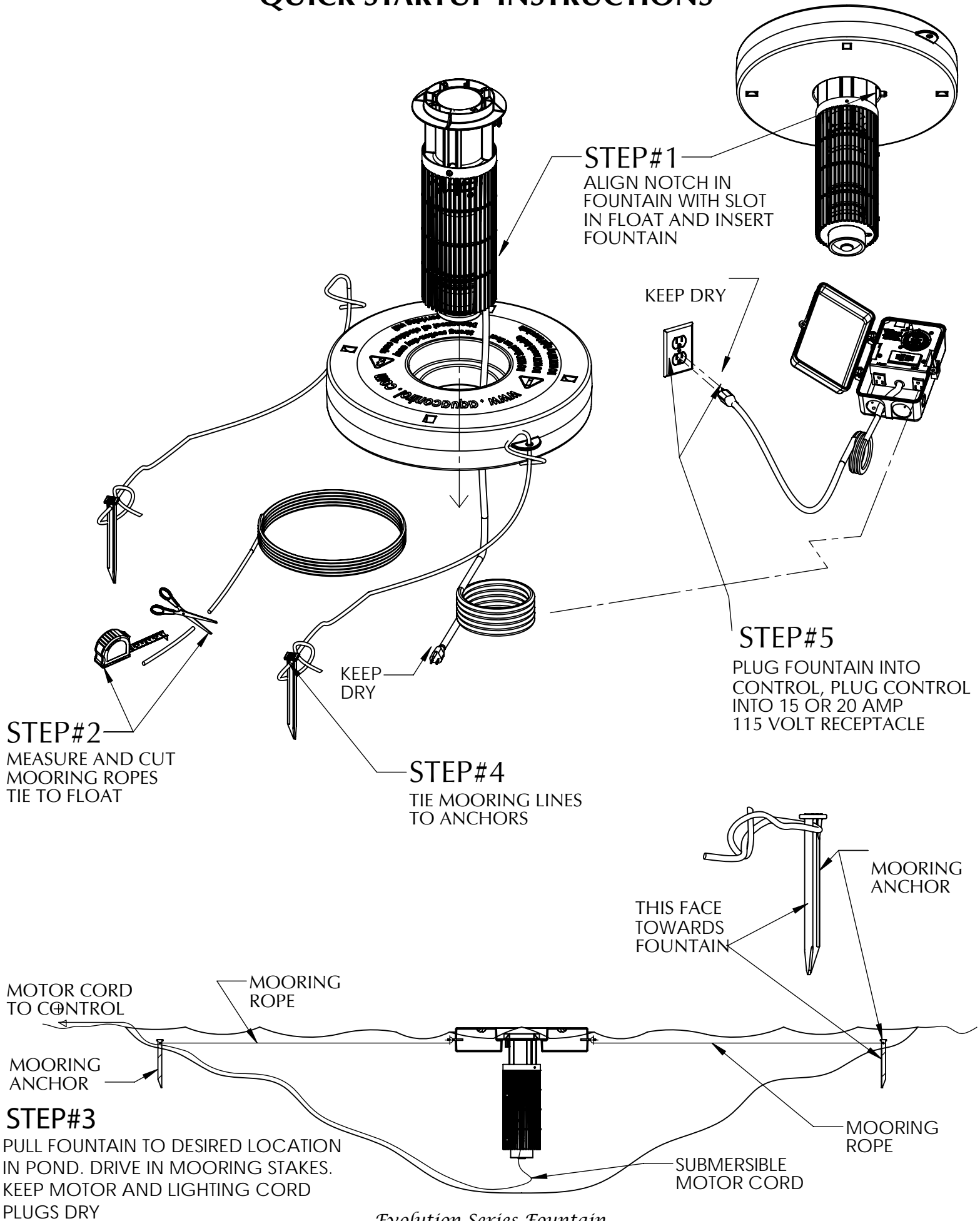
Aqua Control, Inc. or its distributors are not liable for electrician's fees incurred for troubleshooting electrical issues.

## OPTIONAL ACCESSORIES



*Evolution Series Fountain*  
1/2 HP, 115V, 60 Hz

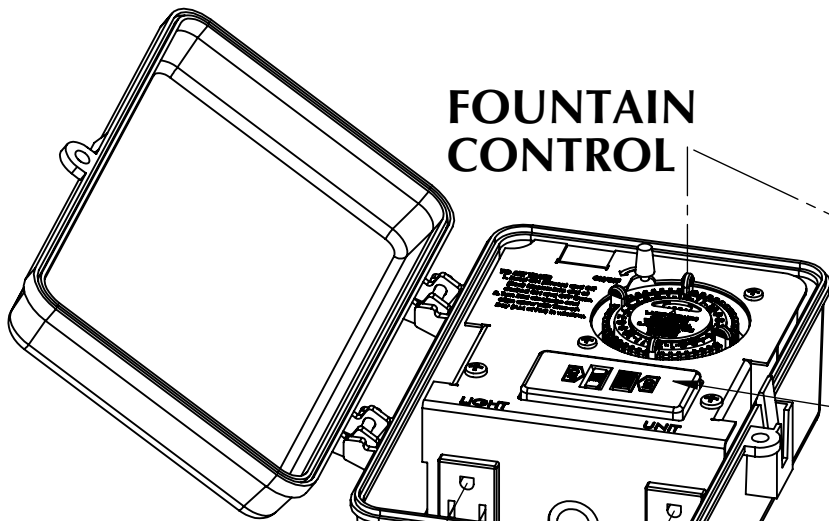
# QUICK STARTUP INSTRUCTIONS



*Evolution Series Fountain*

1/2 HP, 115V, 60 Hz

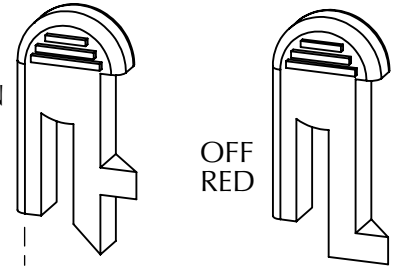
# FOUNTAIN CONTROL-TIMER PROGRAMMING



**FOUNTAIN CONTROL**

ON GREEN

OFF RED

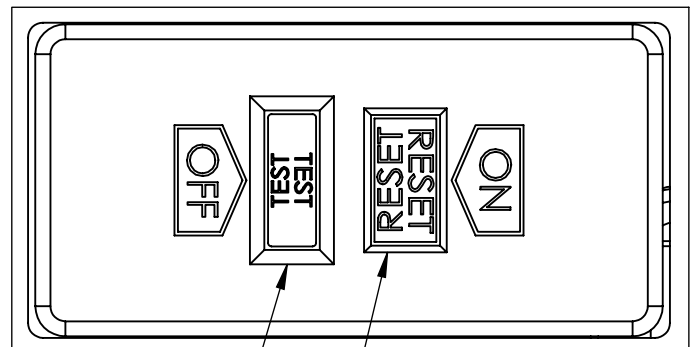


**TRIPPER PINS**

SEE STEP#3

**STEP#6**

TESTING GROUND  
FAULT INTERRUPT(GFCI)



PUSH TO TEST

PUSH TO RESET

**STEP#2**

PLUG IN LIGHTS  
(OPTIONAL  
SOLD SEPARATELY)

**STEP#1**

PLUG IN FOUNTAIN

**STEP#4**

PLUG CONTROL  
INTO STANDARD  
HOUSEHOLD  
OUTLET

**STEP#5**

TURN ON CONTROL

**STEP#7**

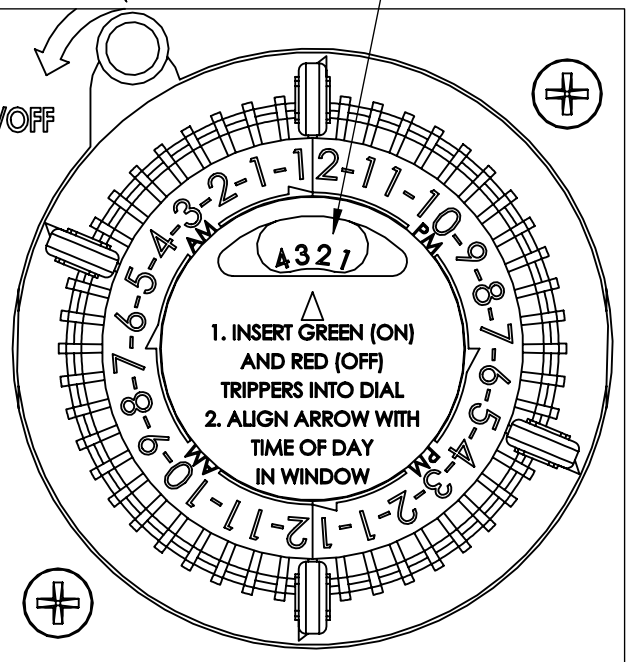
SET CORRECT  
TIME-OF-DAY

**STEP#3**

SET ON/OFF TIMES  
(SEE TRIPPER PINS ABOVE)

TO SET TIMER

1. Insert ON (Green) and Off (Red) trippers into dial at desired ON and OFF times.
2. Turn Dial clockwise and align arrow with Time-of-Day (AM or PM) in window.



1. INSERT GREEN (ON) AND RED (OFF) TRIPPERS INTO DIAL
2. ALIGN ARROW WITH TIME OF DAY IN WINDOW

*Evolution Series Fountain*

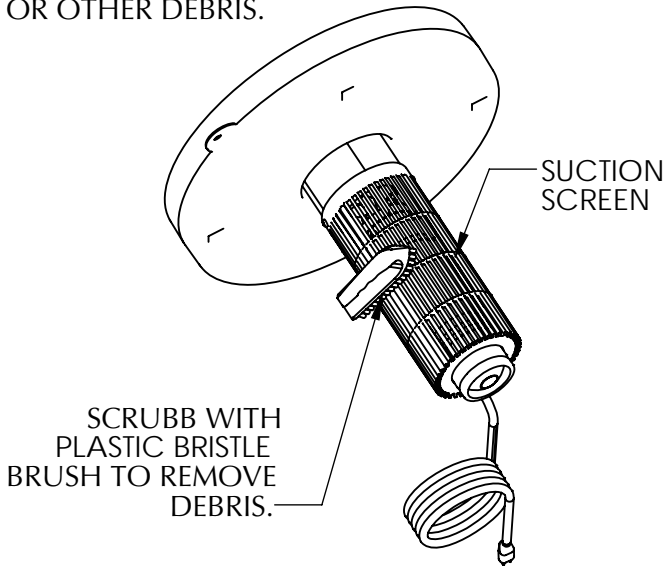
1/2 HP, 115V, 60 Hz

# MAINTENANCE AND ACCESSORY INSTALLATION

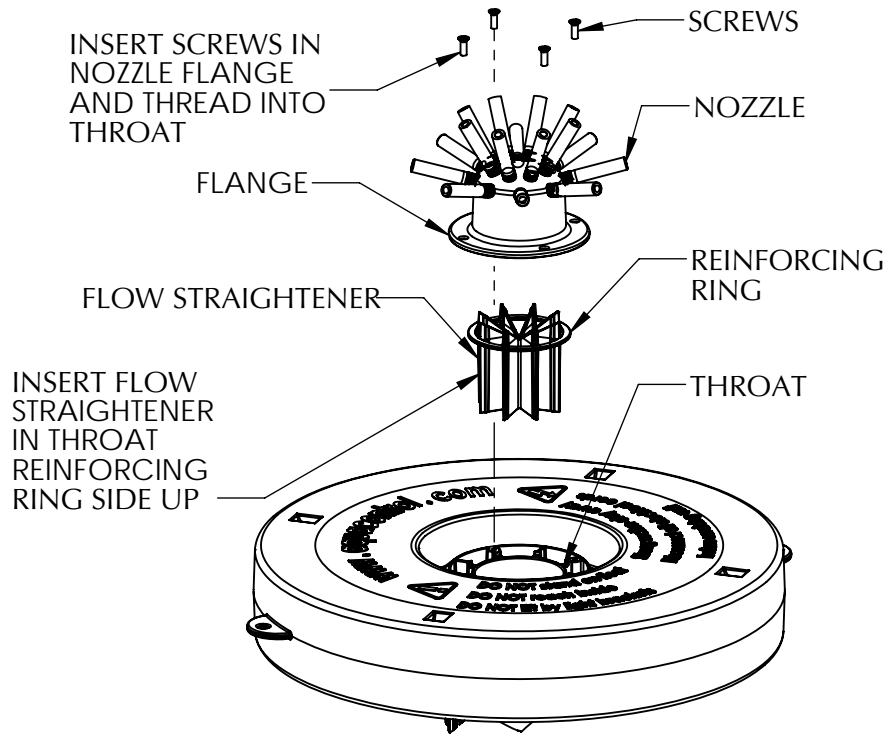
CAUTION!! BEFORE YOU BEGIN, DISCONNECT FROM POWER (UNPLUG FROM CONTROL)

## PLUGGED SUCTION SCREEN

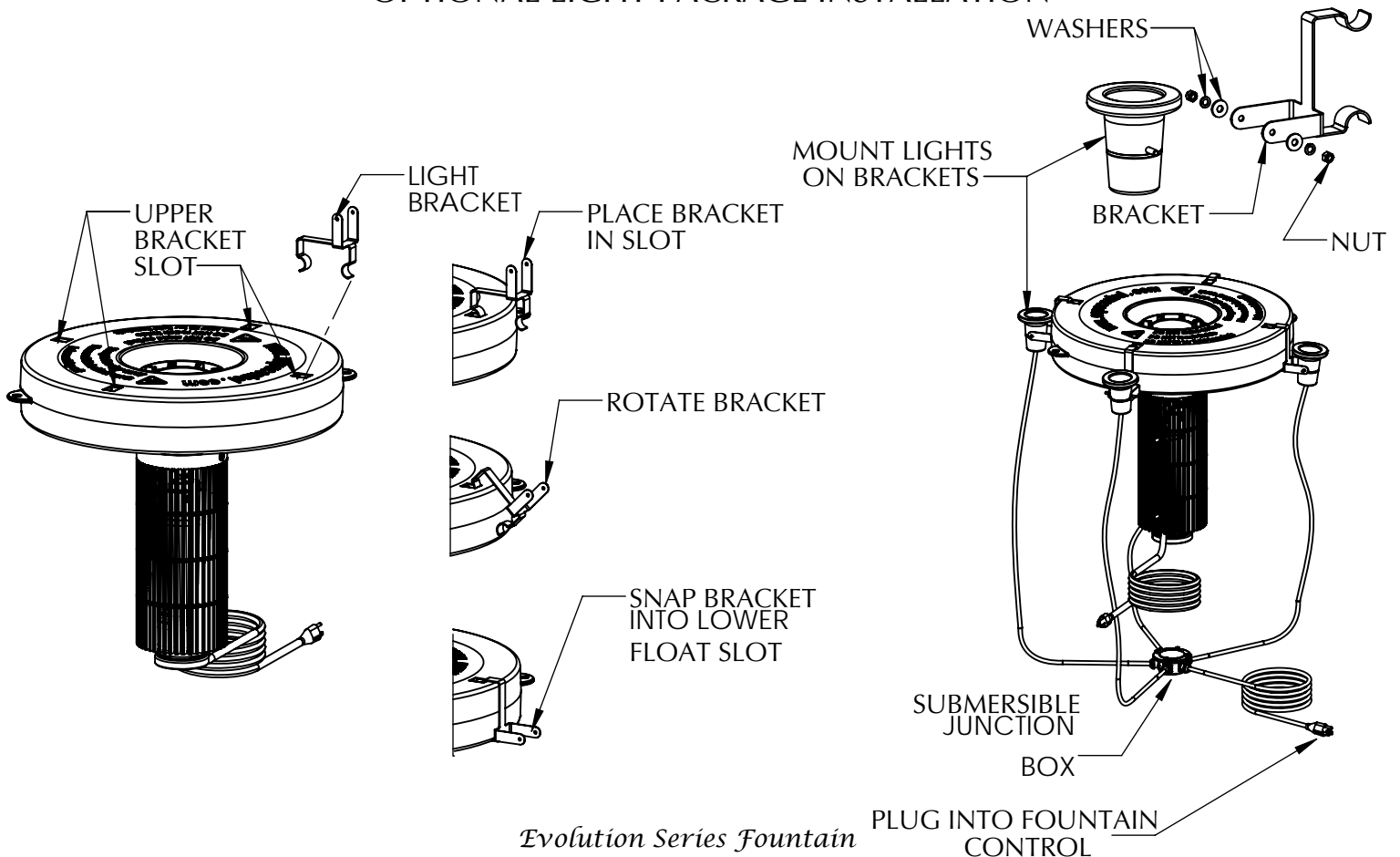
IF YOUR SUCTION SCREEN BECOMES PLUGGED BY POND WEEDS OR OTHER DEBRIS.



## OPTIONAL NOZZLE INSTALLATION



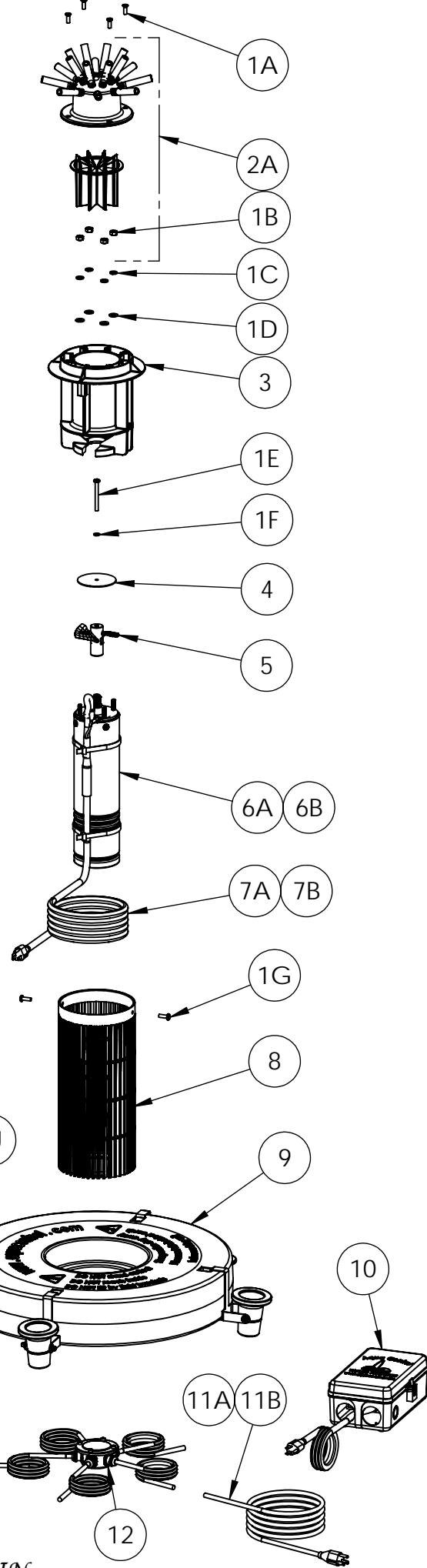
## OPTIONAL LIGHT PACKAGE INSTALLATION



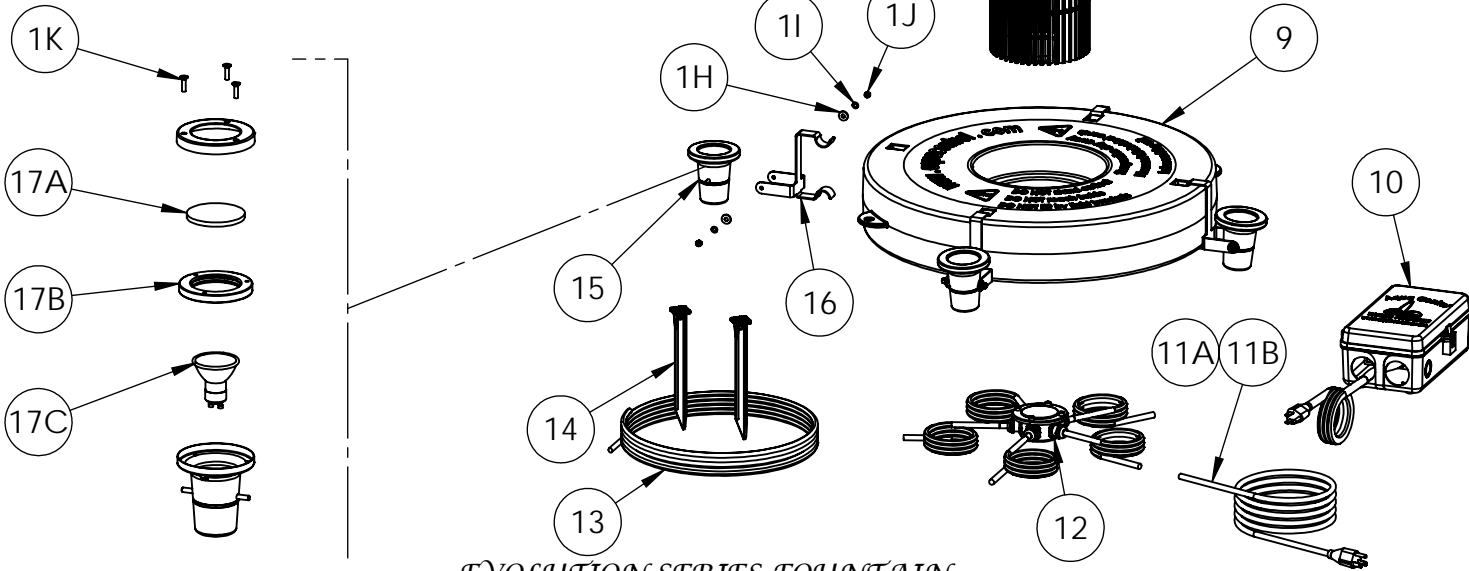
Evolution Series Fountain  
1/2 HP, 115V, 60 Hz

# REPLACEMENT PARTS

ITEM #	PART #	DESCRIPTION	QTY REQUIRED
1	EV-H-KIT	HARDWARE KIT (INCLUDES ITEMS 1A THRU 1J)	1
1A	* EV-H-MSP-0.75	1/4-15 X 3/4 PAN HEAD HI-LOW SCREW	4
1B	EV-H-HN-8	8MM HEX NUT	4
1C	EV-H-LW-8	8MM LOCK WASHER	4
1D	EV-H-FW-313	5/16 FLAT WASHER	4
1E	EV-H-HB-2.50	1/4-20 X 2 1/2 HEX HEAD CAP SCREW	1
1F	80WL-0.25	1/4 LOCK WASHER	1
1G	EV-H-MSP-0.75	1/4-20 X 3/4 PAN HEAD MACHINE SCREW	2
1H	* EV-H-FW-5	5MM FLAT WASHER	8
1I	* EV-H-LW-5	5MM LOCK WASHER	8
1J	* EV-H-HN-5	5MM HEX NUT	8
1K	* EV-H-MSF-4X16	4MM X 16 FLAT HEAD MACHINE SCREW	3
2	*	<b>NOZZLE KIT (INCLUDES NOZZLE, FLOW STRAIGHTENER &amp; FASTENERS)</b>	
2A	* EV6-N-0.50-ARU	1/2HP ARUM NOZZLE KIT	1
2A	* EV6-N-0.50-CLA	1/2HP CLUSTER ARCH NOZZLE KIT	1
2A	* EV6-N-0.50-FLE	1/2HP FLEUR DE LIS NOZZLE KIT	1
2A	* EV6-N-0.50-SAR	1/2HP SPIDER & ARCH NOZZLE KIT	1
2A	* EV6-N-0.50-TIA	1/2HP TIARA NOZZLE KIT	1
3	EV-R-THROAT	EV/OLUTION THROAT	1
4	EV-H-FW-PROP	PROPELLER WASHER	1
5	EV6-R-P-0.50	1/2HP PROPELLER	1
6		<b>REPLACEMENT MOTOR OPTIONS</b>	
6A	EV6-A-M-0.50-100	1/2HP MOTOR WITH 100' OF CORD AND MOLDED PLUG	1
6B	EV6-A-M-0.50-175	1/2HP MOTOR WITH 175' OF CORD AND MOLDED PLUG	1
7		<b>REPLACEMENT MOTOR CORD OPTIONS (INCLUDES MOTOR CONNECTOR &amp; MOLDED PLUG) MOTOR READY</b>	
7A	EV6-A-MC-100	100' MOTOR CORD	1
7B	EV6-A-MC-175	175' MOTOR CORD	1
8	EV-R-SCREEN	EV/OLUTION SUCTION SCREEN	1
9	EV-R-FLOAT	EV/OLUTION FLOAT	1
10	EV6-R-CB	CONTROL BOX WITH 6' CORD & MOLDED PLUG	1
11		<b>LIGHTING CORD OPTIONS (INCLUDES SPLICEKIT &amp; MOLDED PLUG)</b>	
11A	* EV6-R-LC-100	100' LIGHT CORD	1
11B	* EV6-R-LC-175	175' LIGHT CORD	1
12	* EV-R-LJB	LIGHT JUNCTION BOX WITH 6' CORD & SPLICEKIT	1
13	EV-R-ROPE	100' BLACK MOORING ROPE	1
14	EV-R-ANCHOR	EV/OLUTION MOORING STAKES	2
15	* EV-R-LGT-FIX	LIGHT FIXTURE 115V WITH 6' CORD & SPLICE KIT	4
16	* EV-R-LGT-BKT	EV/OLUTION LIGHT BRACKET	4
17		<b>LIGHT FIXTURE COMPONENTS</b>	
17A	* EV-R-LENS	EV/OLUTION CLEAR LENS FOR LIGHT	4
17B	* EV-R-GASKET	EV/OLUTION LIGHT GASKET	4
17C	* EV6-R-BLB-BLU	BLUE LED LAMP	4
17C	* EV6-R-BLB-WHC	COOL WHITE LED LAMP	4
17C	* EV6-R-BLB-WHW	WARM WHITE LED LAMP	4
17C	* EV6-R-BLB-YEL	YELLOW LED LAMP	4
17C	* EV6-R-BLB-GRE	GREEN LED LAMP	4
17C	* EV6-R-BLB-PUR	PURPLE LED LAMP	4
17C	* EV6-R-BLB-RED	RED LED LAMP	4



\* OPTIONAL COMPONENTS NOT INCLUDED WITH UNIT.



*EVOLUTION SERIES FOUNTAIN*  
1/2 HP, 115V, 60Hz

# EVOLUTION SERIES FOUNTAIN TROUBLESHOOTING GUIDE

Trouble	Check	Possible solutions
Fountain doesn't work	<p>Not plugged in</p> <p>GFCI circuit breaker tripped</p> <p>Faulty motor or propeller jammed</p>	<p>Cord must be plugged into a 3-wire outlet that is protected by a Ground Fault Circuit Interrupter, or control box supplied with fountain.</p> <p>Reset circuit breaker. If circuit breaker trips repeatedly, your electrical system may have a defect. Turn off circuit breaker and call an electrician to correct the problem.</p> <p>Motor too hot and overload protection shut motor off. Let motor cool down.</p> <p>Disconnect power, check and clear any debris in throat of fountain.</p>
Fountain spray pattern smaller than before	<p>Fountain intake clogged</p> <p>Nozzle clogged</p>	<p>Disconnect power, check suction screen for debris</p> <p>Disconnect power, remove nozzle cap, check for debris.</p>
Fountain starts then stops	<p>GFCI circuit breaker tripping</p> <p>Faulty motor or propeller jammed</p>	<p>Reset GFCI. If GFCI continues to trip repeatedly, your electrical system may have a defect. Turn off circuit breaker and call an electrician to correct the problem.</p> <p>Motor too hot and overload protection shut motor off. Let motor cool down.</p> <p>Disconnect power, check and clear any debris in throat of fountain.</p>